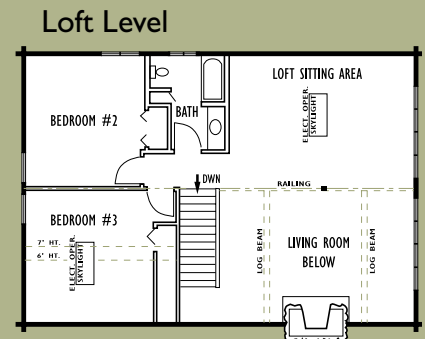
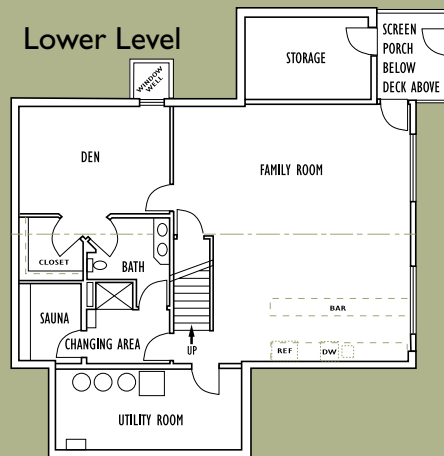
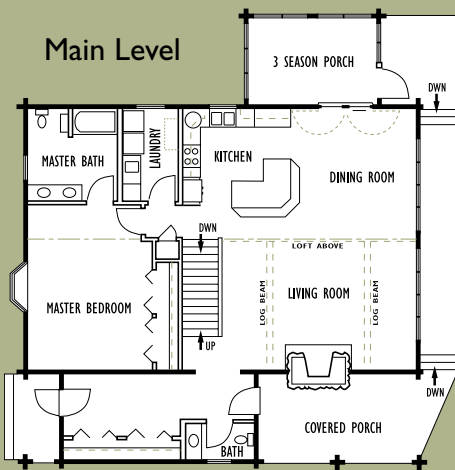


KABEKONA



Main: 1620
 Loft: 880
 Lower Level: 1620



LOG HOMES
 Minnesota, Inc.

PO Box 1530,
 8313 State Hwy 371 NW
 Walker, MN 56484
 (Located one mile north of Walker on Hwy. 371)

218-547-2023 or 800-919-3228
 www.LogHomesMN.com
 email: loghomes@eot.com
 Fax: 218-547-1687
 Contractor License No. 7440