



SINCE 1980

# Log Homes Minnesota



*Over 40 Years of Experience*

QUALITY CONSTRUCTION • AFFORDABLE CUSTOM DESIGN • CUSTOMER SATISFACTION

# Log Homes Minnesota Offers: **SOLID LOG &**



*Our Solid Log Homes* are built to perfection and offer

- A custom solid log home with an ageless beauty and modern convenience
- Energy efficiency
- Minimal settling/shrinking
- Turnkey, shell and logs only packages

Dear Steve,

Our log home is gorgeous! Thank you for making this huge project go so smoothly. We have enjoyed meeting and working with you. You have a talented and professional staff, both at Log Homes Minnesota as well as your subcontractors. Thanks Again!

-Don & Sandy P.

## Why Log Homes Minnesota?



### AFFORDABLE PLANS TO FIT ANY BUDGET

- » Highly competitive pricing without sacrificing quality or craftsmanship.
- » Special attention to details from the custom-built cabinets down to the finishing trim.
- » Our main goal is to build the home of your dreams while staying within your budget.



### PROFESSIONAL CONSTRUCTION & EXCEPTIONAL SERVICE

- » Our crew strives to satisfy the customer during each and every step of the building process.
- » We make recommendations, and discuss any changes that may arise during construction.
- » We're just a phone call or email away and will answer any question concerning your new home.

# CONVENTIONAL CONSTRUCTION



*Dear Steve & Crew:*

Jim and I want to say "Thank You." We have worked with lots of people throughout the years and want you to know we think you are all TOPS!!! From salesmen returning our calls to a friendly secretary (who knows my voice), to your working crew – taking the time to explain, offer advice, ask questions – they are all around fantastic people. Thanks a million, it made our home more fun to watch go up.

*—Jim & Sharon Fearing*

*Our Conventional Construction* crew offers

- A low to no maintenance exterior "smart-siding" with endless color, texture and style options
- A solid wood siding that is low maintenance with plenty of styles and colors
- Custom floor plans and can build to any level



## OUTSTANDING CREW & OWNERS

- » Our skilled carpenters have more than 100 years of collective experience and are craftsmen who enjoy every part of the building process.
- » We pride ourselves on building each home as if it were our own. We listen, inform, and follow through with every client request.



## CUSTOM DESIGN & FULLY CUSTOMIZED

- » Choose between full log or stick-built construction.
- » Every home starts at the blueprint stage to include features that incorporate your passions and enhance your lot.
- » Our design service can start from scratch, one of our plans, a magazine floor plan, or even a sketch on a napkin! We'll keep "drawing" until your vision is realized.



 Virtual Tour Online!

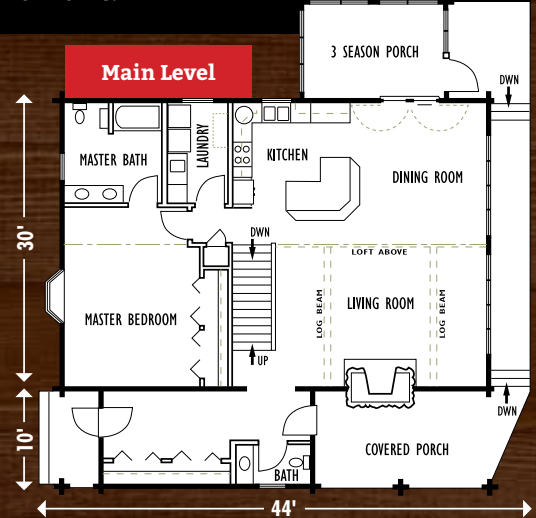
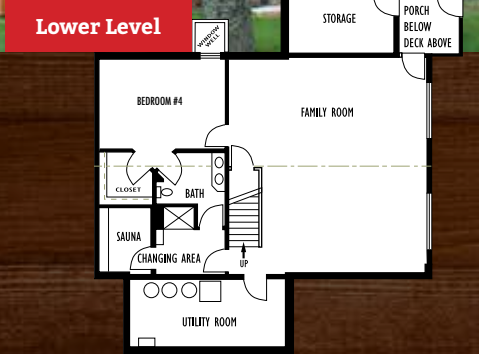
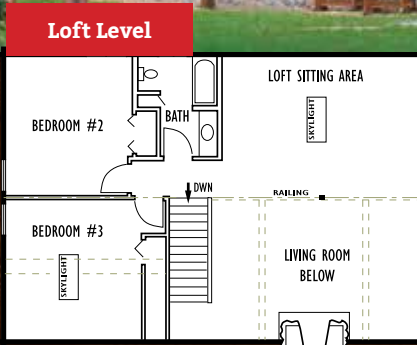
# Kabekona

MODEL HOME

4  3.5 

One of our oldest and most popular plans.

- 1580 sq. ft. main / 1580 sq. ft. lower / 920 sq. ft. loft
- Easily scale it up or down
- The loft is optional
- There are hundreds of variations available upon request
- The Walker office is located in this style of home.



 Virtual Tour Online!

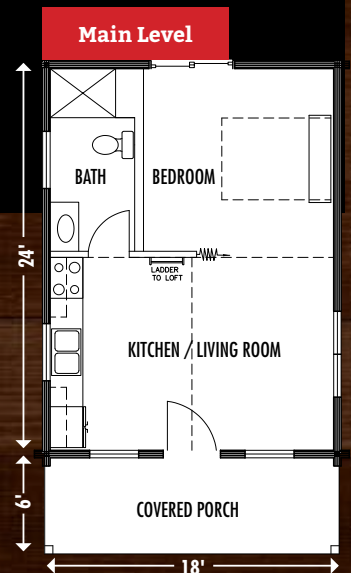
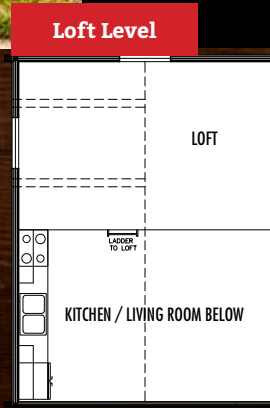
# Lake Cottage

MODEL HOME

1  1 

Simple open plan this is perfect for a guest cottage, hunting retreat or lake cabin.

- 432 sq. ft. main / 216 sq. ft. loft



**The floorplans in this brochure** are some of our favorites. We hope you use them as inspiration as you design your new home or cabin! Log Homes Minnesota starts every project with a new set of blueprints, custom designed with your interests and budget in mind. We try to incorporate a perfect placement on your lot and we can build to any level.



Virtual Tour Online!



# Ponderosa

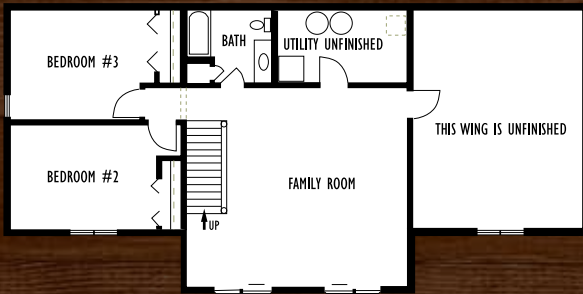
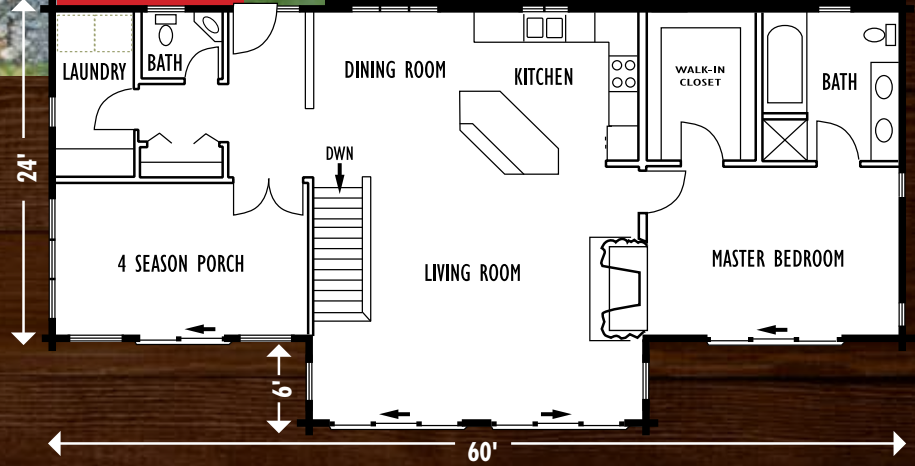
MODEL HOME

3 2.5

Main level living at its best.

- 1584 sq. ft. main / 1584 sq. ft. lower level
- Open floor plan with many options available
- Tons of natural light and a view from any room
- Scale it up or down, add an attached garage
- Full basement provides endless opportunities

Main Level



Lower Level



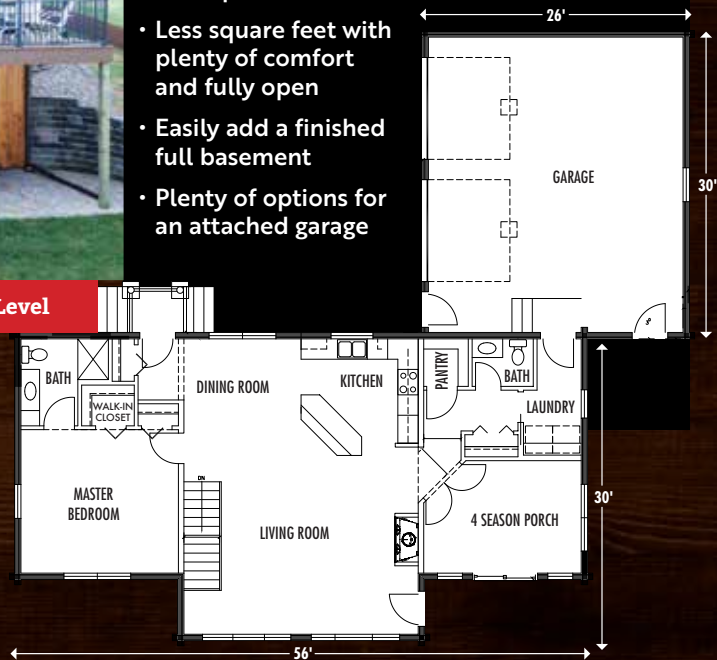
# Steamboat Bay

2 2.5

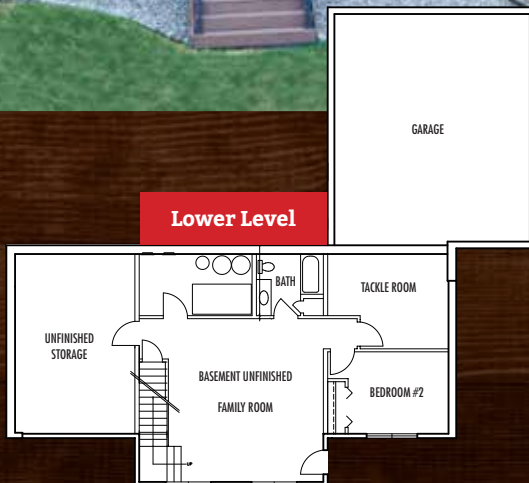
The Ponderosa, scaled down.

- 1488 sq. ft. main / 1488 sq. ft. lower / 928 sq. ft. finished lower
- Less square feet with plenty of comfort and fully open
- Easily add a finished full basement
- Plenty of options for an attached garage

Main Level



Lower Level





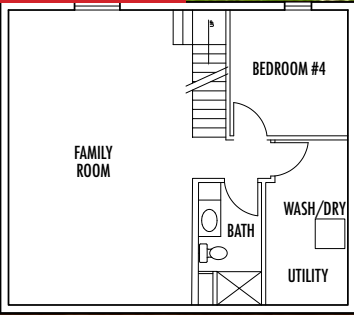
# Legacy Lake Cabin

4 3

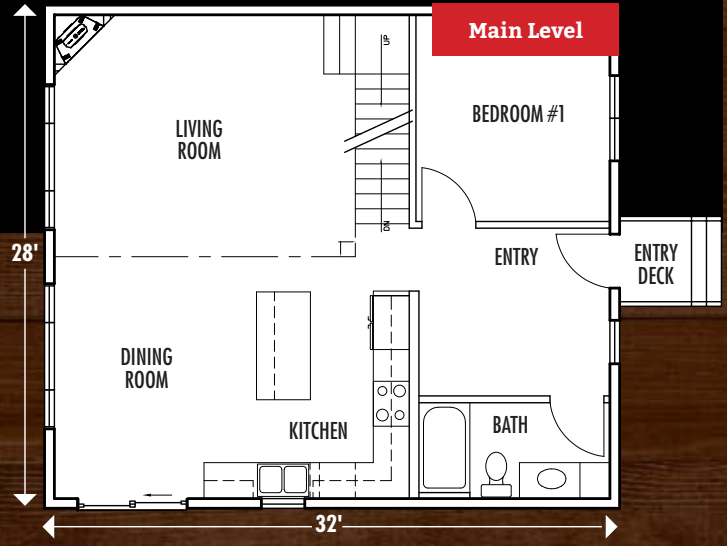
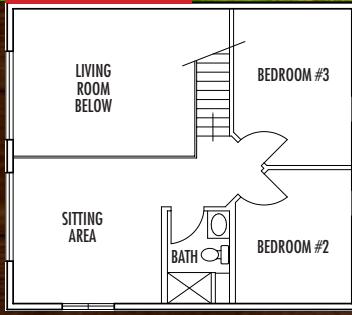
For those that need to comfortably sleep many without over building.

- 896 sq. ft. main / 672 sq. ft. loft / 896 sq. ft. lower / 602 sq. ft. finished lower
- Open floor plan and traditional loft above
- Large entryway
- Full basement could include bar, TV room and extra bedroom

Lower Level



Upper Level

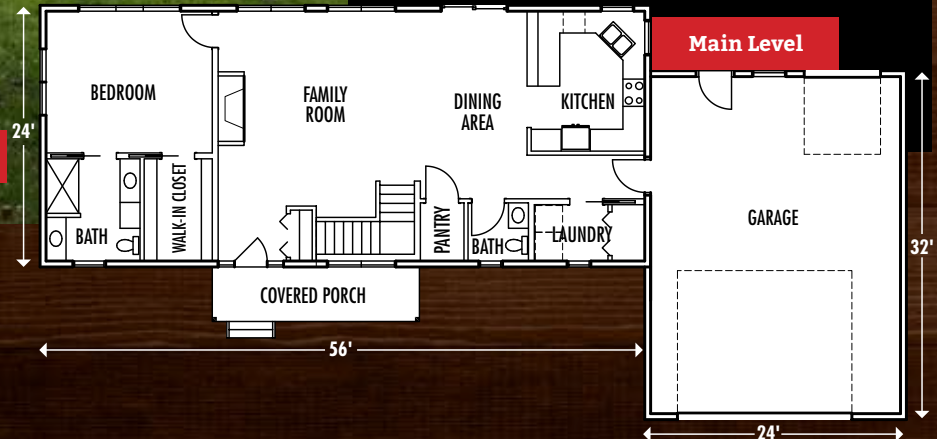
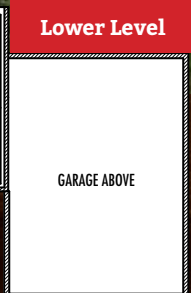
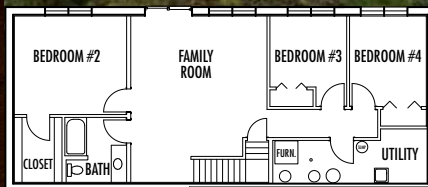


# Stony Point

4 2.5

Very spacious design for a couple or a crowd.

- 1344 sq. ft. main / 1344 sq. ft. lower level
- Main level living
- Easily attach a garage
- A view from every room and good flow



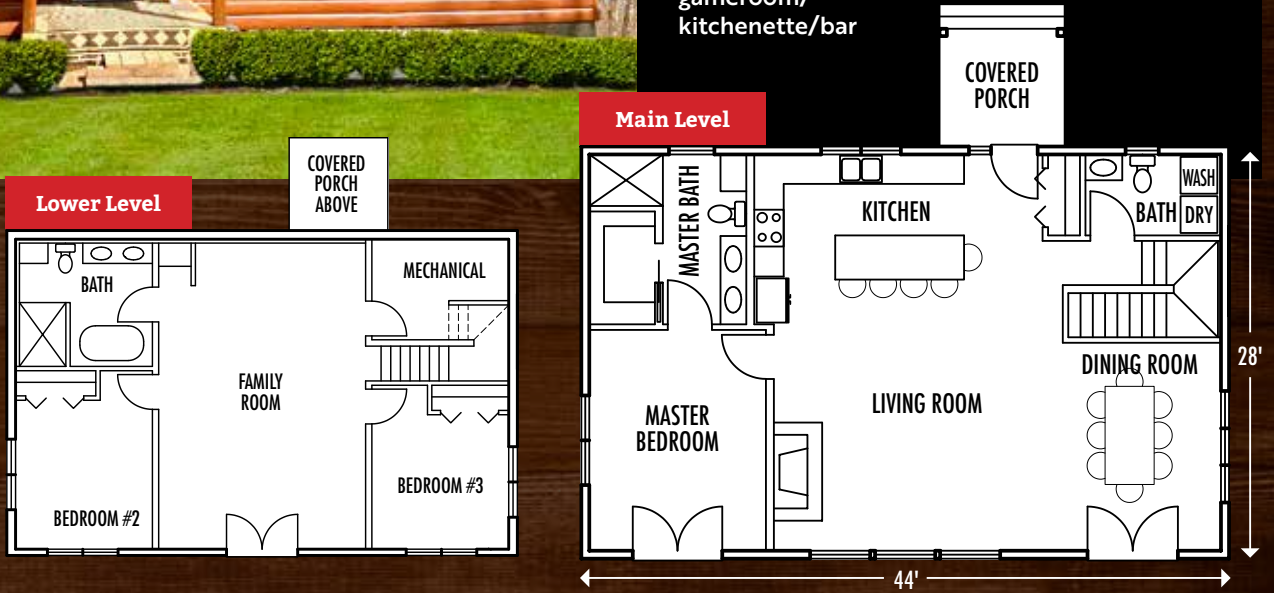


# Hideaway North

3 🛏 2.5 🚿

Spacious simplicity, endless windows, up north modern and main level living

- 1232 sq. ft. main / 1232 sq. ft. lower level
- Wide open floor plan with large kitchen island
- Cozy master suite, roomy bath and walk-in closet
- Full walkout basement designed with privacy and comfort in mind for guests and optional gameroom/ kitchenette/bar



# VIEW OUR 3 MODEL HOMES IN WALKER, MN

Our standard office hours are Monday - Thursday 9 am - 4 pm · Friday 9 am - 3 pm.

Is it more convenient to meet on an evening or weekend?

Please call our office at 218-547-2023 to set up a time that works for you.



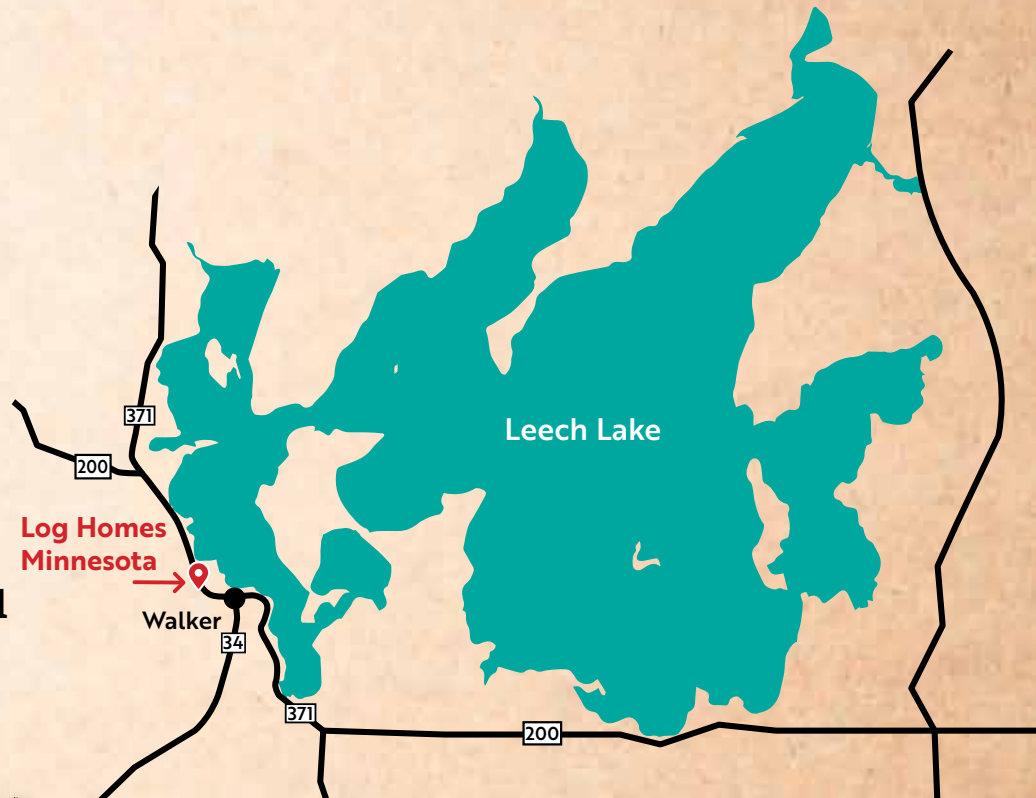
Kabekona



Ponderosa



Lake Cottage



We're located in the beautiful  
Leech Lake area

1 mile north of Walker on Hwy 371



SINCE 1980

**Log Homes Minnesota**

8313 State 371 NW  
PO Box 1530  
Walker, MN 56484

walkerloghomes@gmail.com  
FAX 218-547-1687

Monday - Thursday: 9AM - 4PM  
Friday: 9AM - 3PM  
Other times by appointment

Contractor License No. BC007440  
References available upon request

Visit  
[LogHomesMN.com](http://LogHomesMN.com)

- Virtual tours of each model home
- See more photos – interior & exterior
- Download this brochure & price sheet
- See more floor plans

**CONTACT US TODAY** for more info or a FREE quote  
**218-547-2023 • walkerloghomes@gmail.com**